



BVA's Cross-Community Flight: April 11, 2pm ET

Evan ('Evanet')
BVA Administration Team

BVA is pleased to be hosting the 6th Cross-Community Flight on Saturday, April 11 at 2pm ET. During the last Cross-Community Flight that BVA hosted in 2013, we maxed out our FSX server with 100 users connected. During this event, we hope to hit that same record again!

During the Cross-Community Flight, members from online aviation multiplayer communities around the world join together for a 'VFR hops'-style flight while discussing topics that impact the online aviation world today. The event is a fun opportunity to share ideas with some of the finest virtual pilots, and—of course—to fly! The flight plan takes pilots from Santa Barbara (KSBA), through KMRY (Monterey), to Sacramento (KSMF). BVA's controllers will be online to provide ATC services for the arrival into KSMF.

We hope BVA members are out in full force to support this event! To participate, connect to our [Member TeamSpeak](#) at or after 1:30pm ET on April 11. Pilots are required to use the default Beechcraft King Air 350 and should spawn on the ground at KSBA to prepare for the planned 2pm ET departure. Please note that all ATC and pilot communications will be performed in the Member TeamSpeak server (voice will be disabled in FSX).

In order to enable special server settings for the event, the FSX server will be restarted at 1:00pm and 6:00pm ET on Saturday, April 11. Please time your participation in the event to ensure that your flight is not disconnected during these server restarts.

Please visit our [forums](#) for more information about the Cross-Community Flight.

Introducing the Route Finder


Evan ('Evanet')
BVA Administration Team

BVA is proud to release [Route Finder](#), a simple application that allows pilots and air traffic controllers to find preferred routes for BVA flights. The application includes preferred routes in both our home airspace as well as in the airspaces we feature during events. In addition to the route itself, the application identifies any associated restrictions (e.g., aircraft type or cruise altitude), and provides links to FSX flight plan files as necessary.

In addition to this recent release, the format of preferred routes listed on the Regional Circuit and Domestic Journey page has been modified to align with results of the Route Finder. The Getaway page will now display a link for pilots to search for routes and flight plan files directly.

Pilots are encouraged to use the Route Finder to search for and file preferred routes when flying in ATC airspace. Pilots who file non-preferred routes may be offered a re-route to a preferred route. Of course, those who would prefer not to have their route modified can normally be accommodated by air traffic control.

The new Route Finder may be found under the 'Pilot References' section of the 'All Members' website menu tab, on the [Preferred Routes](#) page.



Cape Air Virtual >>
Pilot of the Month

This month, Cape Air Virtual recognizes the pilot who had the most flights. For March, that pilot is Joe (KAP577), who had a over 11 flights! Congratulations, Joe!

▶ Route Finder

Airport Entry

Departure ICAO Code:

Arrival ICAO Code:



Regional Circuit



Tuesday, April 7
(8-11pm ET)

KBOS (Boston) &
KLGa (LaGuardia)

Our controllers fully staff two airports and provide complete ATC coverage for flights between the two; pilots are encouraged to file preferred routes and can expect multiple handoffs and busy frequencies throughout the event

Domestic Journey



Thursday, April 16
(8-11pm ET)

KTPA (Tampa) &
KATL (Atlanta)

The Domestic Journey provides BVA pilots with the opportunity to enjoy medium-haul flights across North America with air traffic control coverage from gate-to-gate.

Pack the Pattern



Sunday, May 3
(2-4pm ET)

KEZM (Heart of Georgia)

Pilots are encouraged to fly into the event or fly IFR or VFR circuits of a busy Class Bravo airport, with full ATC coverage for the entire evening (including Clearance, Ground, multiple Tower and Approach controllers, and maybe even a Center!)

Fly-In



Saturday, May 16
(3-6pm ET)

Pacific Northwest
(CYXX, KBLI, and KPAA)

Tower (Local) Controllers will feature several small airports designed for General Aviation aircraft. Fly IFR or VFR within controlled airspace; general aviation aircraft (anything from a Cessna to a LearJet) are preferred.

Challenge



Wednesday, April 15
(8-1pm ET)

Bad Weather RC
KMKE-KMSN

BVA's Challenge event will test your piloting skills in the realistic atmosphere of BVA. This event is about exercising your multi-tasking ability in challenging and unfamiliar situations—something pilots have to do all the time.

Getaway



May 9-17

Seattle
(KOLM, KPAA, KSEA, KTIW)

BVA's Getaway Event takes pilots and controllers for a change of scenery, and features various airports across North America. Join BVA as we 'Getaway' to explore new airports and destinations

Controller of the Month

Evan ('Evanet')

BVA Administration Team

Each month, one member of our controller community is selected by ATC Instructors for special recognition for outstanding performance and ongoing dedication. As essential frontline service providers, controllers play the most important role in ensuring the satisfaction and enjoyment of our membership.

This month, the ATC Instructors recognize **Barry ('BarryJ398')** as Controller of the Month. Barry recently passed his final

exam at the Class Bravo Tower level, and has now begun the process of radar training needed to become certified to work Approach. Barry has picked up the new procedures extremely quickly. Self-study and regular practice has helped ensure he is prepared for each and every session.

Outside of Approach training, we are happy to see that Barry continues to practice working Tower on his own. Barry is vocal and 'in control' of the frequency, while being helpful and supportive where pilots need assistance. We thank Barry for his dedication to the community and look forward to seeing him achieve the certification for Approach in the next few weeks.



FlightSimCon 2015

Evan ('Evanet')

BVA Administration Team

With just over two months to go until FlightSimCon 2015, our members and administrators are gearing up for an exciting event at the New England Air Museum this June. More than thirty BVA members are signed up to attend the event and—much like the conference's lineup of speakers and exhibitors—the numbers are constantly growing. Many of us will be flying and/or controlling in person at the event, and bringing our own at-home simulator setups to display at the conference.

One of the many activities we have planned over the weekend is a dinner for BVA members. If you will be in Hartford, Connecticut on the evening of Friday, June 12, we hope you will join us at Wood'N'Tap in Hartford for a member-only dinner. If you wish to

join us, please complete this [sign-up form](#) so we can plan numbers. There is plenty planned for BVA members above and beyond the many activities and speakers on the official FlightSimCon schedule.

For members who are not able to make the trip to the New England Air Museum in person, we hope you will participate in the event remotely. During the weekend of FlightSimCon, Boston Center will be staffed throughout the conference (10am-5pm on Saturday and 10am-3pm on Sunday). Additional local control will also be online throughout the event. Logging in to the server and flying helps us demonstrate to FlightSimCon attendees that BVA is a busy, active community they should consider joining.

Please visit our [forums](#) for more information about FlightSimCon.

Community Updates

Evan ('Evanet')

BVA Administration Team

Last month, we transitioned to a new website hosting provider to help improve the stability and reliability of our website and forums. During the first month with our new provider, we are not aware of a single outage, and have been happy to note improved loading times. As a result, we are contracting for a renewable one-year term of service with the new provider. The renewal will cost \$64, and provide website hosting until March of 2016. By comparison to our former provider, we will be saving approximately \$1.50/month.

In November, we made the difficult decision to postpone the scheduled 60 Hours of ATC event in the wake of instability we were experiencing with our FSX server provider. In the weeks leading up to the event, there were a number of short-term

outages at our provider that led us to believe we would not be able to run an uninterrupted event. While efforts were made to reschedule 60 Hours of ATC in early 2015, other events and the unplanned website migration made this a challenge. The decision has now been made to run the event this year. Holding 60 Hours of ATC this November will allow us to focus on FlightSimCon and some of the other exciting events that we have coming up this year, including the Cross-Community Flight this month, and "The Hump" this summer.

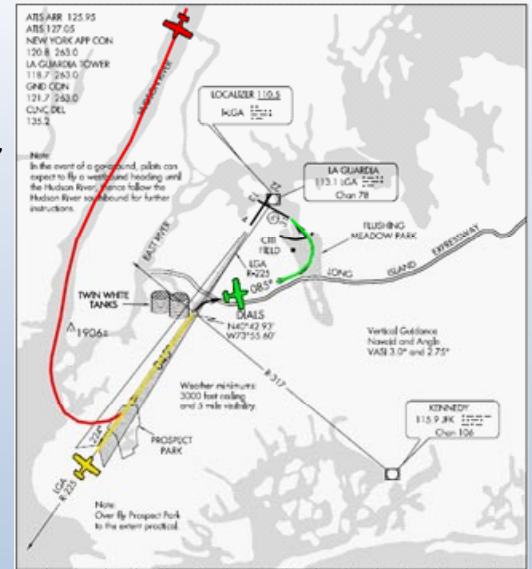
Finally, we are happy to announce that applications to the air traffic control training program have re-opened until April 15, 2015. Members who are interested in providing air traffic control on our server are encouraged to apply [on our website](#). The application involves the completion of an online exam. Apply soon: applications close on April 15!



La Guardia's Expressway Visual

As you may have noticed, more air traffic controllers have been opening up positions within the New York Center (ZNY) airspace. With the new airspace, pilots have the opportunity to fly a whole set of new procedures specific to ZNY airports. One good example is the Expressway Visual Runway 31 Approach at La Guardia International Airport (KLGA). When flying this approach, pilots will be vectored by ATC to track the LGA R-225 inbound course to DIALS (one of a few possible vector patterns is shown above). Upon crossing DIALS or reporting the 'Twin White Tanks' in sight, ATC will clear you for the approach. Cross DIALS at or above 2,500' then follow the Long Island Expressway while descending towards the runway. With the runway off your left side as a reference, start descending and try to make the left turn to final over Flushing Meadow Park. You should be lined up with the runway less than a mile from the end. You should be at about 1,200' as you start the turn to final, and be at 300-500' when you are lined up.

The approach is used regularly when the wind favors northeasterly landings at KLGA. More information about the Expressway Visual Runway 31 can be found on our forums.



Screenshot of the Month

Max ('Ameri767300')
 BVA Administration Team

depicts an F-18 on an exciting approach for a carrier landing. Visit our [forums](#) to view this month's entrants.

Congratulations to **Devon ('azreak1')** for winning the March Screenshot of the Month contest. Displayed below, his shot

Stay tuned! April's contest will be posted shortly!

