

Evan ('evanet')
BVA Administration Team


Save the date! Book off the time with your family, send the kids to your in-laws for the weekend, plan your homework out, and cancel anything else you have going on. BVA's 6th anniversary event will be held on **Saturday, December 8 from 2-6pm ET**. This year, we celebrate six years, over 3,300 members (on average 2 more are accepted every day), pilot training (over 575 PRP flights have been flown by over 100 users), and the best pilots and controllers in FSX.

In this year's anniversary celebration we're going back to a single large event. Last year's High Five event was a week-long celebration of special events. This year, we're bringing everyone together at once to see just how jam-packed we can get our skies! For four hours on December 8, **we'll be flying and controlling Boston and New York: 15 controllers staffed across KBOS, KEWR, KISP, JFK, and KLGA**. You get to fly whenever and wherever you want between these controlled airports and make this the biggest birthday celebration we've ever had. And you'll have to: we're hoping to cram over 100 pilots into the server.

Boston will be fully staffed throughout the event. Local controllers at all four New York airports will work with our multiple sectors of New York Approach, Boston Approach, and Boston Center to keep the IFR aircraft separated enroute. For pilots wishing to fly the airliners, the New York "big three" are the place to go. General aviation aircraft can work at Long Island (KISP) and any of the other ZBW airports which will be covered by Boston Center.

The event is open to all BVA members, and will feature special dispatched routes for members of our United Regional and Cape Air Virtual airlines.

Keep your eyes on the website for more information about the event!

 **Cape Air Virtual >>**
Pilot of the Month
Each month, Cape Air Virtual recognizes the pilot who has the most hours for the airline. For October, that pilot is Claude ('treking1'), who has flown a total of 10.7 hours!

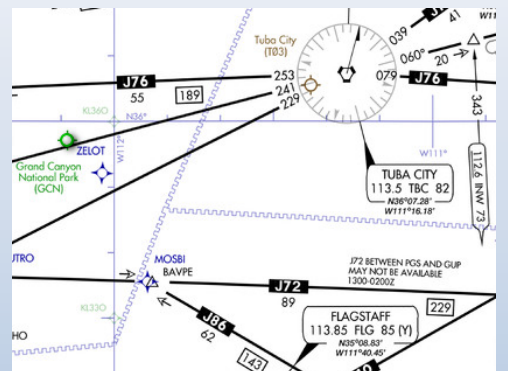
Pilot Tip of the Month

How to Find ARTCC Boundaries

If you regularly view Boston Virtual ATC's [Live Session Info Map](#), then you know it is a good resource for determining when you have entered and exited various airspaces, as the boundaries for Boston (ZBW), New York (ZNY), Cleveland (ZOB), and Washington (ZDC) centers are denoted by dark red lines. However, what should you do if you need to find an ARTCC boundary that is not listed on the Live Map?

Luckily, all high level IFR enroute charts denote the boundaries of different center airspaces with a gray 'squiggly' line, so you can use them as an additional resource when trying to figure out when you need to call a center controller. These charts, along with several others, are available from www.skyvector.com. Once you visit the website, click on the 'World Hi' button in the upper right-hand corner of the screen to view the high level IFR enroute charts, and then search for an ARTCC boundary. For example, if you navigate to the Tuba City VOR by typing 'TBC' into the text box in the upper left-hand corner of the screen and then clicking the 'Go' button, you will find the intersection of Los Angeles, Denver, and Albuquerque centers nearby.

So, if you find yourself wondering when or where to contact Seattle Center during our current Getaway event, you might find it helpful to consult one of these charts!



Regional Circuit



Tuesday, November 5
(8-11pm ET)

KALB (Albany) &
KBOS (Boston)

Our controllers fully staff two airports and provide complete ATC coverage for flights between the two; pilots are encouraged to file preferred routes and can expect multiple handoffs and busy frequencies throughout the event

Domestic Journey



Thursday, November 29
(8-11pm ET)

KOKC (Oklahoma City) &
KDEN (Denver)

The Domestic Journey provides BVA pilots with the opportunity to enjoy medium-haul flights across North America with air traffic control coverage from gate-to-gate.

Pack the Pattern



Thursday, November 15
(8-10pm ET)

KPHX (Phoenix)

Pilots are encouraged to fly into the event or fly IFR or VFR circuits of a busy Class Bravo airport, with full ATC coverage for the entire evening (including Clearance, Ground, multiple Tower and Approach controllers, and maybe even a Center!)

Fly-In



Saturday, November 10
(1-4m ET)

Seattle
(KBFI, KOLM, and KRNT)

Tower (Local) Controllers will feature several small airports designed for General Aviation aircraft. Fly IFR or VFR within controlled airspace; general aviation aircraft (anything from a Cessna to a LearJet) are preferred.

Challenge



Sunday, November 4
(3-6pm ET)

Crosswind Landings
KPDX (Portland)

BVA's Challenge event will test your piloting skills in the realistic atmosphere of BVA. This event is about exercising your multi-tasking ability in challenging and unfamiliar situations—something pilots have to do all the time.

Getaway



October 28 - November 4

Pacific Northwest
(KSEA, KPDX, CYVR, CYLW)

BVA's Getaway Event takes pilots and controllers for a change of scenery, and features various airports across North America. Join BVA as we 'Getaway' to explore new airports and destinations

Controller of the Month

Evan ('evanet')

BVA Administration Team

Each month, one member of our controller community is selected by ATC Instructors for special recognition for outstanding performance and ongoing dedication. As essential frontline service providers, controllers play the most important role in ensuring the satisfaction and enjoyment of our membership.

This month, our ATC Instructions recognize one of our young stars, **Josh ('sidwinderr54')**, known amongst the controller community

as "Josh Junior". Putting in just under 20 hours this month and in the top ten for controlled hours, Jr. recently got checked out for Class B Tower, has been a very active participant in staffing our events, and has shown continued positive dedication to our ATC community. In training logs, Josh has been noted for his exceptional handling of VFR aircraft (particularly in the Class B environment, which is one of the more challenging aspects for Class B Tower controllers) as well as excellent overall situational awareness and foresight.

